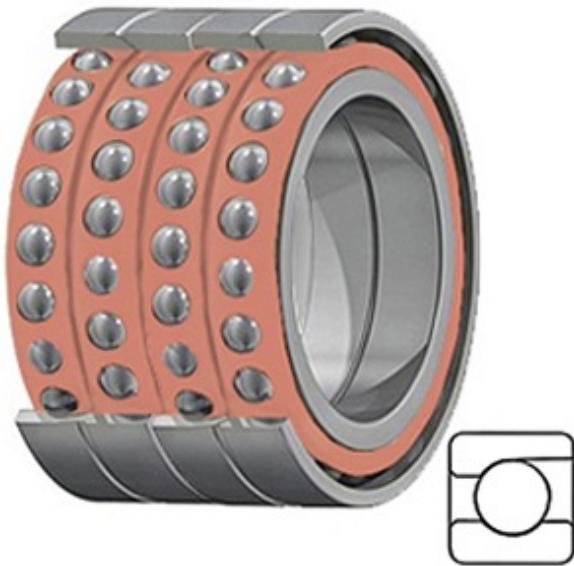




BEARING CORP.OF AMERICA



1.575 Inch | 40 Millimeter x 2.441 Inch | 62
Millimeter x 1.89 Inch | 48 Millimeter TIMKEN
2MM9308WI QUH Precision Ball Bearings

Bearing No. 2MM9308WI QUH

2MM9308WI QUH Bearing 2D drawings and 3D CAD
models

Category	Precision Ball Bearings
Inventory	0.0
Manufacturer Name	TIMKEN
Minimum Buy Quantity	N/A
Weight	0.454
EAN	0087796325258
Product Group	B04270
Enclosure	Open
Precision Class	ABEC 7 ISO P4
Material - Ball	Steel
Number of Bearings	4 (1 Quadruplex Set)
Contact Angle	15 Degree
Preload	Heavy
Raceway Style	1 Rib Outer Ring
Cage Material	Phenolic
Rolling Element	Ball Bearing
Mounting Arrangement	Quadruplex-Universal
Flush Ground	Yes
Inch - Metric	Metric
Other Features	Single Row Angular Contact Super High Precision
Long Description	40MM Bore; 62MM Outside Diameter; 48MM Width; Open Enclosure; ABEC 7 ISO P4 Precision;



BEARING CORP.OF AMERICA

	Steel Ball Material; 4 (1 Quadruplex Set) Bearings; 15 Degree Contact Angle; Phenolic Cage Material; 1 Rib Oute
Category	Precision Ball Bearings
UNSPSC	31171531
Harmonized Tariff Code	8482.10.50.28
Noun	Bearing
Keyword String	Angular Contact Ball
Manufacturer URL	http://www.timken.com
Manufacturer Item Number	2MM9308WI QUH
Weight / LBS	1
B	1.89 Inch 48 Millimeter
d	1.575 Inch 40 Millimeter
D	2.441 Inch 62 Millimeter