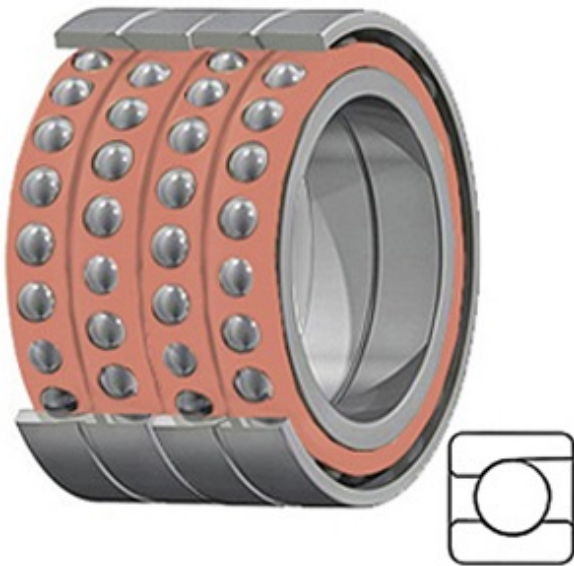




BEARING CORP.OF AMERICA



1.378 Inch | 35 Millimeter x 2.165 Inch | 55 Millimeter x 1.575 Inch | 40 Millimeter TIMKEN 2MM9307WI QUH Precision Ball Bearings

Bearing No. 2MM9307WI QUH

2MM9307WI QUH Bearing 2D drawings and 3D CAD models

Category	Precision Ball Bearings
Inventory	0.0
Manufacturer Name	TIMKEN
Minimum Buy Quantity	N/A
Weight	0.308
EAN	0087796324855
Product Group	B04270
Enclosure	Open
Precision Class	ABEC 7 ISO P4
Material - Ball	Steel
Number of Bearings	4 (1 Quadruplex Set)
Contact Angle	15 Degree
Preload	Heavy
Raceway Style	1 Rib Outer Ring
Cage Material	Phenolic
Rolling Element	Ball Bearing
Mounting Arrangement	Quadruplex-Universal
Flush Ground	Yes
Inch - Metric	Metric
Other Features	Single Row Angular Contact Super High Precision
Long Description	35MM Bore; 55MM Outside Diameter; 40MM Width; Open Enclosure; ABEC 7 ISO P4 Precision;



BEARING CORP.OF AMERICA

	Steel Ball Material; 4 (1 Quadruplex Set) Bearings; 15 Degree Contact Angle; Phenolic Cage Material; 1 Rib Oute
Category	Precision Ball Bearings
UNSPSC	31171531
Harmonized Tariff Code	8482.10.50.28
Noun	Bearing
Keyword String	Angular Contact Ball
Manufacturer URL	http://www.timken.com
Manufacturer Item Number	2MM9307WI QUH
Weight / LBS	0.68
D	2.165 Inch 55 Millimeter
B	1.575 Inch 40 Millimeter
d	1.378 Inch 35 Millimeter