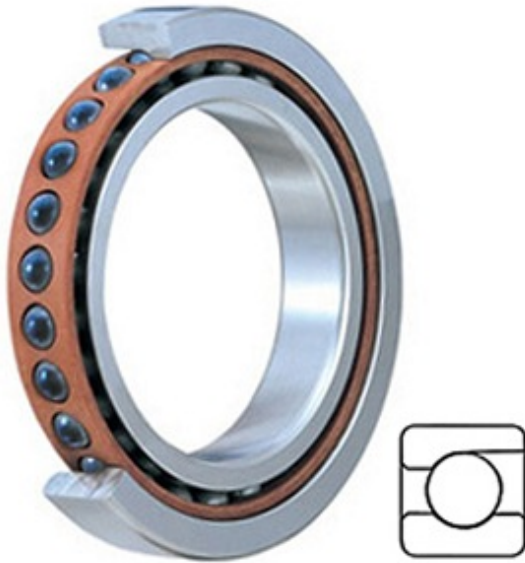




BEARING CORP.OF AMERICA



3MMC9122WI SUM Bearing 2D drawings and 3D CAD models

4.331 Inch | 110 Millimeter x 6.693 Inch | 170 Millimeter x 1.102 Inch | 28 Millimeter TIMKEN 3MMC9122WI SUM Precision Ball Bearings

Bearing No. 3MMC9122WI SUM

Category	Precision Ball Bearings
Inventory	0.0
Manufacturer Name	TIMKEN
Minimum Buy Quantity	N/A
Weight	2.041
Product Group	B04270
Enclosure	Open
Precision Class	ABEC 7 ISO P4
Material - Ball	Ceramic
Number of Bearings	1 (Single)
Contact Angle	25 Degree
Preload	Medium
Raceway Style	1 Rib Outer Ring
Cage Material	Phenolic
Rolling Element	Ball Bearing
Mounting Arrangement	Universal
Flush Ground	Yes
Inch - Metric	Metric
Other Features	Single Row Angular Contact Super High Precision Hybrid Corrosion Resistant Ball
Long Description	110MM Bore; 170MM Outside Diameter; 28MM Width; Open Enclosure; ABEC 7 ISO P4 Precision; Ceramic Ball Material; 1



BEARING CORP.OF AMERICA

	(Single) Bearings; 25 Degree Contact Angle; Phenolic Cage Material; 1 Rib Outer Ring
Category	Precision Ball Bearings
UNSPSC	31171531
Harmonized Tariff Code	8482.10.50.28
Noun	Bearing
Keyword String	Angular Contact Ball
Manufacturer URL	http://www.timken.com
Manufacturer Item Number	3MMC9122WI SUM
Weight / LBS	4.5
B	1.102 Inch 28 Millimeter
d	4.331 Inch 110 Millimeter
D	6.693 Inch 170 Millimeter