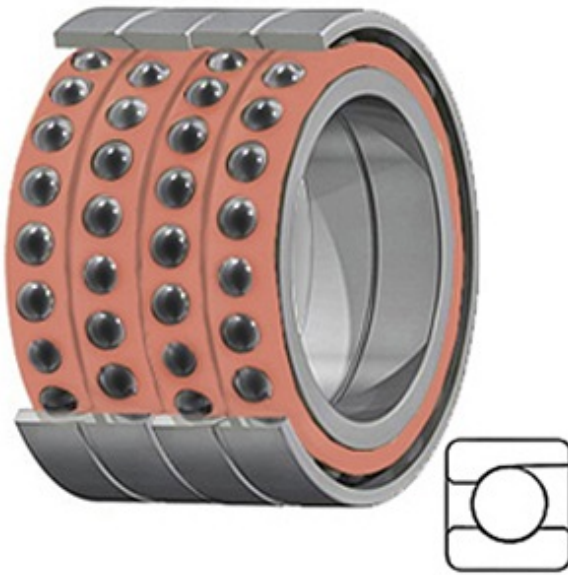




# BEARING CORP.OF AMERICA



4.331 Inch | 110 Millimeter x 6.693 Inch | 170 Millimeter x 4.409 Inch | 112 Millimeter TIMKEN 3MMC9122WI QUH Precision Ball Bearings

Bearing No. 3MMC9122WI QUH

3MMC9122WI QUH Bearing 2D drawings and 3D CAD models

Category	Precision Ball Bearings
Inventory	0.0
Manufacturer Name	TIMKEN
Minimum Buy Quantity	N/A
Weight	8.165
EAN	0087796348059
Product Group	B04270
Enclosure	Open
Precision Class	ABEC 7   ISO P4
Material - Ball	Ceramic
Number of Bearings	4 (1 Quadruplex Set)
Contact Angle	25 Degree
Preload	Heavy
Raceway Style	1 Rib Outer Ring
Cage Material	Phenolic
Rolling Element	Ball Bearing
Mounting Arrangement	Quadruplex-Universal
Flush Ground	Yes
Inch - Metric	Metric
Other Features	Single Row   Angular Contact   Super High Precision   Hybrid   Corrosion Resistant Ball
Long Description	110MM Bore; 170MM Outside Diameter; 112MM Width; Open Enclosure;



## BEARING CORP.OF AMERICA

	ABEC 7   ISO P4 Precision; Ceramic Ball Material; 4 (1 Quadruplex Set) Bearings; 25 Degree Contact Angle; Phenolic Cage Material; 1 Rib
Category	Precision Ball Bearings
UNSPSC	31171531
Harmonized Tariff Code	8482.10.50.28
Noun	Bearing
Keyword String	Angular Contact Ball
Manufacturer URL	<a href="http://www.timken.com">http://www.timken.com</a>
Manufacturer Item Number	3MMC9122WI QUH
Weight / LBS	18
d	4.331 Inch   110 Millimeter
B	4.409 Inch   112 Millimeter
D	6.693 Inch   170 Millimeter