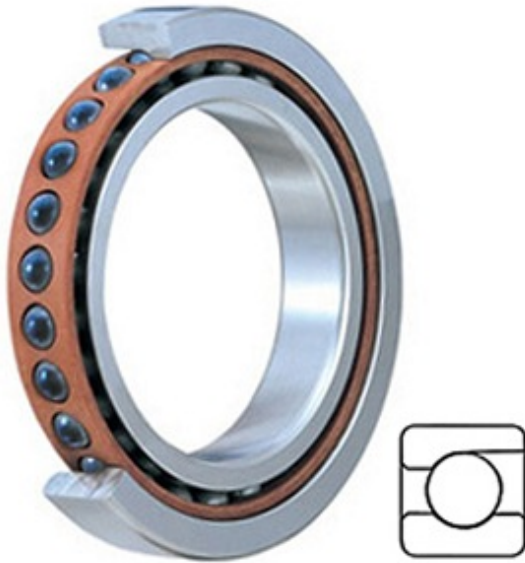




# BEARING CORP.OF AMERICA



2MMC9118WI SUM Bearing 2D drawings and 3D CAD models

3.543 Inch | 90 Millimeter x 5.512 Inch | 140 Millimeter x 0.945 Inch | 24 Millimeter TIMKEN 2MMC9118WI SUM Precision Ball Bearings

Bearing No. 2MMC9118WI SUM

Category	Precision Ball Bearings
Inventory	0.0
Manufacturer Name	TIMKEN
Minimum Buy Quantity	N/A
Weight	1.17
Product Group	B04270
Enclosure	Open
Precision Class	ABEC 7   ISO P4
Material - Ball	Ceramic
Number of Bearings	1 (Single)
Contact Angle	15 Degree
Preload	Medium
Raceway Style	1 Rib Outer Ring
Cage Material	Phenolic
Rolling Element	Ball Bearing
Mounting Arrangement	Universal
Flush Ground	Yes
Inch - Metric	Metric
Other Features	Single Row   Angular Contact   Super High Precision   Hybrid   Corrosion Resistant Ball
Long Description	90MM Bore; 140MM Outside Diameter; 24MM Width; Open Enclosure; ABEC 7   ISO P4 Precision; Ceramic Ball Material; 1



## BEARING CORP.OF AMERICA

	(Single) Bearings; 15 Degree Contact Angle; Phenolic Cage Material; 1 Rib Outer Ring
Category	Precision Ball Bearings
UNSPSC	31171531
Harmonized Tariff Code	8482.10.50.28
Noun	Bearing
Keyword String	Angular Contact Ball
Manufacturer URL	<a href="http://www.timken.com">http://www.timken.com</a>
Manufacturer Item Number	2MMC9118WI SUM
Weight / LBS	2.58
d	3.543 Inch   90 Millimeter
D	5.512 Inch   140 Millimeter
B	0.945 Inch   24 Millimeter