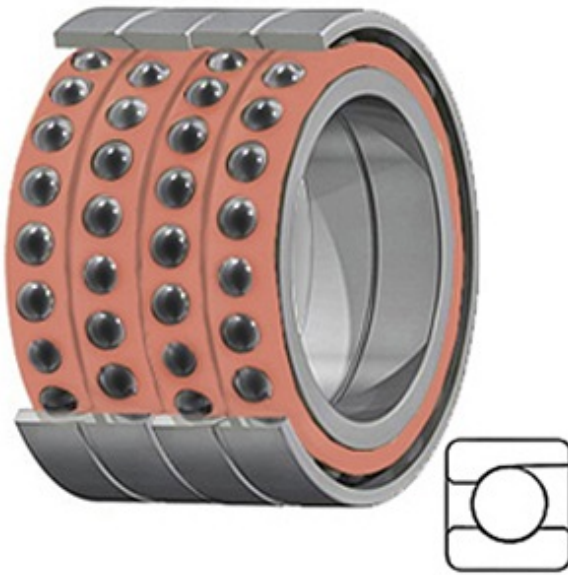




# BEARING CORP.OF AMERICA



3.543 Inch | 90 Millimeter x 5.512 Inch | 140  
Millimeter x 3.78 Inch | 96 Millimeter TIMKEN  
2MMC9118WI QUH Precision Ball Bearings

Bearing No. 2MMC9118WI QUH

2MMC9118WI QUH Bearing 2D drawings and 3D  
CAD models

Category	Precision Ball Bearings
Inventory	0.0
Manufacturer Name	TIMKEN
Minimum Buy Quantity	N/A
Weight	4.69
EAN	0087796332874
Product Group	B04270
Enclosure	Open
Precision Class	ABEC 7   ISO P4
Material - Ball	Ceramic
Number of Bearings	4 (1 Quadruplex Set)
Contact Angle	15 Degree
Preload	Heavy
Raceway Style	1 Rib Outer Ring
Cage Material	Phenolic
Rolling Element	Ball Bearing
Mounting Arrangement	Quadruplex-Universal
Flush Ground	Yes
Inch - Metric	Metric
Other Features	Single Row   Angular Contact   Super High Precision   Hybrid   Corrosion Resistant Ball
Long Description	90MM Bore; 140MM Outside Diameter; 96MM Width; Open Enclosure;



## BEARING CORP.OF AMERICA

	ABEC 7   ISO P4 Precision; Ceramic Ball Material; 4 (1 Quadruplex Set) Bearings; 15 Degree Contact Angle; Phenolic Cage Material; 1 Rib O
Category	Precision Ball Bearings
UNSPSC	31171531
Harmonized Tariff Code	8482.10.50.28
Noun	Bearing
Keyword String	Angular Contact Ball
Manufacturer URL	<a href="http://www.timken.com">http://www.timken.com</a>
Manufacturer Item Number	2MMC9118WI QUH
Weight / LBS	10.32
d	3.543 Inch   90 Millimeter
D	5.512 Inch   140 Millimeter
B	3.78 Inch   96 Millimeter