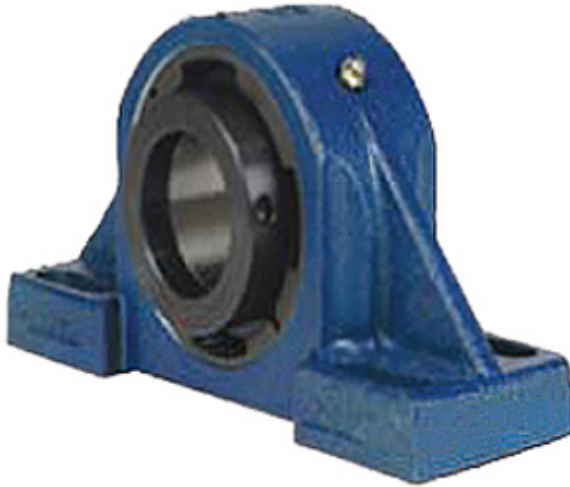




# BEARING CORP.OF AMERICA



4.5 Inch | 114.3 Millimeter x 5.82 Inch | 147.828 Millimeter x 4.75 Inch | 120.65 Millimeter QM INDUSTRIES QVPF26V408SEC Pillow Block Bearings

Bearing No. QVPF26V408SEC

QVPF26V408SEC Bearing 2D drawings and 3D CAD models

Category	Pillow Block Bearings
Inventory	0.0
Manufacturer Name	TIMKEN
Minimum Buy Quantity	N/A
Weight	56.296
EAN	0883450289887
Product Group	M06288
Number of Mounting Holes	4
Mounting Method	V Lock
Housing Style	4 Bolt Pillow Block
Rolling Element	Spherical Roller Bearing
Housing Material	Cast Steel
Expansion / Non-expansion	Expansion
Mounting Bolts	3/4 Inch
Relubricatable	Yes
Insert Part Number	22226
Seals	Double Lip Viton
Housing Configuration	1 Piece Solid
Inch - Metric	Inch
Other Features	Double Row   Single Nut
Long Description	4 Bolt Pillow Block; 4-1/2" Bore; 4-3/4" Base to Center Height; V Lock Mount; Spherical Roller Bearing; 11-7/8" Minimum Bolt



## BEARING CORP.OF AMERICA

	Spacing; 14-1/2" Bolt Spacing Maximum; Relubricatable;
Category	Pillow Block
UNSPSC	31171511
Harmonized Tariff Code	8483.20.40.80
Noun	Bearing
Keyword String	Pillow Block
Manufacturer URL	<a href="http://www.qmbearings.com">http://www.qmbearings.com</a>
Manufacturer Item Number	QVPF26V408SEC
Weight / LBS	72
d	4.5 Inch   114.3 Millimeter
Bolt Spacing Minimum	11.875 Inch   301.625 Millimeter
Actual Bolt Center to Center	0 Inch   0 Millimeter
B	4.75 Inch   120.65 Millimeter
Bolt Spacing Maximum	14.5 Inch   368.3 Millimeter
Nominal Bolt Center to Center	13.2 Inch   335.3 Millimeter
D	5.82 Inch   147.828 Millimeter