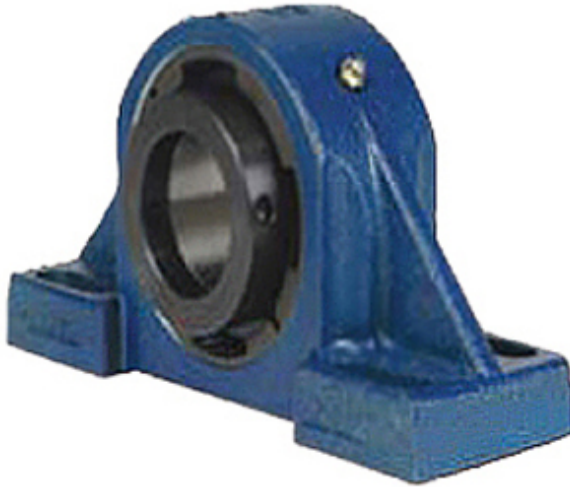




# BEARING CORP.OF AMERICA



3.937 Inch | 100 Millimeter x 5.94 Inch | 150.876  
Millimeter x 4.252 Inch | 108 Millimeter QM  
INDUSTRIES QAAPF20A100SEC Pillow Block  
Bearings

Bearing No. QAAPF20A100SEC

QAAPF20A100SEC Bearing 2D drawings and 3D CAD  
models

Category	Pillow Block Bearings
Inventory	0.0
Manufacturer Name	TIMKEN
Minimum Buy Quantity	N/A
Weight	25.878
EAN	0883450299435
Product Group	M06288
Number of Mounting Holes	4
Mounting Method	Concentric Collar
Housing Style	4 Bolt Pillow Block
Rolling Element	Spherical Roller Bearing
Housing Material	Cast Steel
Expansion / Non-expansion	Expansion
Mounting Bolts	3/4 Inch
Relubricatable	Yes
Insert Part Number	22220
Seals	Double Lip Viton
Housing Configuration	1 Piece Solid
Inch - Metric	Metric
Other Features	Double Row   Double Collar   With Set Screw
Long Description	4 Bolt Pillow Block; 100MM Bore; 108MM Base to Center Height; Concentric Collar Mount; Spherical



## BEARING CORP.OF AMERICA

	Roller Bearing; 276.225MM Minimum Bolt Spacing; 339.852MM Bolt Spacing Maximum; Relubricatable; Cast St
Category	Pillow Block
UNSPSC	31171511
Harmonized Tariff Code	8483.20.40.80
Noun	Bearing
Keyword String	Pillow Block
Manufacturer URL	<a href="http://www.qmbearings.com">http://www.qmbearings.com</a>
Weight / LBS	67
Nominal Bolt Center to Center	12.1 Inch   308.5 Millimeter
Actual Bolt Center to Center	0 Inch   0Millimeter
B	4.252 Inch   108 Millimeter
d	3.937 Inch   100 Millimeter
Bolt Spacing Minimum	10.875 Inch   276.225Millimeter
D	5.94 Inch   150.876 Millimeter
Bolt Spacing Maximum	13.38 Inch   339.852Millimeter