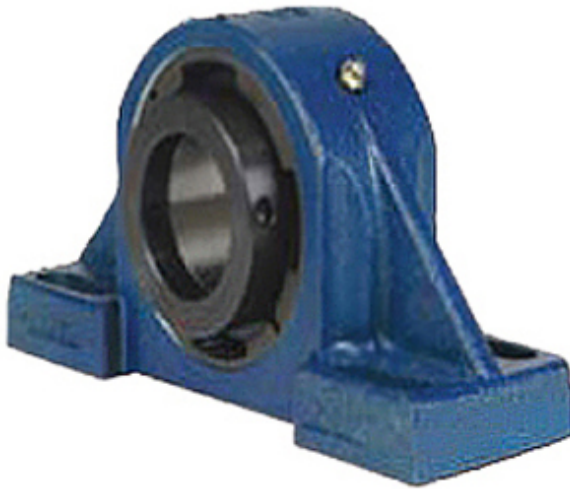




BEARING CORP.OF AMERICA



3.937 Inch | 100 Millimeter x 4.59 Inch | 116.586
Millimeter x 4.252 Inch | 108 Millimeter QM
INDUSTRIES QAPF20A100SEB Pillow Block
Bearings

Bearing No. QAPF20A100SEB

QAPF20A100SEB Bearing 2D drawings and 3D CAD
models

Category	Pillow Block Bearings
Inventory	0.0
Manufacturer Name	TIMKEN
Minimum Buy Quantity	N/A
Weight	25.878
EAN	0883450299305
Product Group	M06288
Number of Mounting Holes	4
Mounting Method	Concentric Collar
Housing Style	4 Bolt Pillow Block
Rolling Element	Spherical Roller Bearing
Housing Material	Cast Steel
Expansion / Non-expansion	Expansion
Mounting Bolts	3/4 Inch
Relubricatable	Yes
Insert Part Number	22220
Seals	Double Lip Nitrile Rubber
Housing Configuration	1 Piece Solid
Inch - Metric	Metric
Other Features	Double Row Single Collar With Set Screw
Long Description	4 Bolt Pillow Block; 100MM Bore; 108MM Base to Center Height; Concentric Collar Mount; Spherical



BEARING CORP.OF AMERICA

	Roller Bearing; 276.225MM Minimum Bolt Spacing; 339.852MM Bolt Spacing Maximum; Relubricatable; Cast St
Category	Pillow Block
UNSPSC	31171511
Harmonized Tariff Code	8483.20.40.80
Noun	Bearing
Keyword String	Pillow Block
Manufacturer URL	http://www.qmbearings.com
Weight / LBS	67
Nominal Bolt Center to Center	12.1 Inch 308.5 Millimeter
Bolt Spacing Maximum	13.38 Inch 339.852Millimeter
d	3.937 Inch 100 Millimeter
B	4.252 Inch 108 Millimeter
Bolt Spacing Minimum	10.875 Inch 276.225Millimeter
D	4.59 Inch 116.586 Millimeter
Actual Bolt Center to Center	0 Inch 0Millimeter