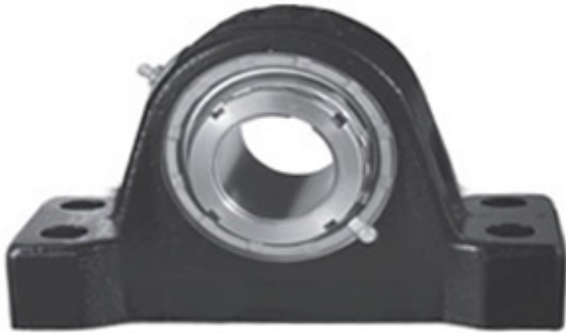




# BEARING CORP.OF AMERICA

4 Inch | 101.6 Millimeter x 5.406 Inch | 137.312  
 Millimeter x 5.75 Inch | 146.05 Millimeter  
 REXNORD MPS9400YF Pillow Block Bearings



Bearing No. MPS9400YF

MPS9400YF Bearing 2D drawings and 3D CAD models

Category	Pillow Block Bearings
Inventory	0.0
Manufacturer Name	REXNORD
Minimum Buy Quantity	N/A
Weight	53.572
EAN	0698210712747
Product Group	M06288
Number of Mounting Holes	4
Mounting Method	Tapered Adapter Sleeve
Housing Style	4 Bolt Pillow Block
Rolling Element	Spherical Roller Bearing
Housing Material	Cast Iron
Expansion / Non-expansion	Expansion
Mounting Bolts	1 Inch
Relubricatable	Yes
Insert Part Number	9400YU
Seals	Heavy Contact
Housing Configuration	1 Piece Solid
Inch - Metric	Inch
Other Features	Double Row   Extra Heavy Duty   Redesigned Shaft Size
Long Description	4 Bolt Pillow Block; 4" Bore; 5-3/4" Base to Center Height; Tapered Adapter Sleeve Mount; Spherical Roller Bearing;



## BEARING CORP.OF AMERICA

	Relubricatable; Cast Iron; Heavy Contact; Expansion
Category	Pillow Block
UNSPSC	31171511
Harmonized Tariff Code	8483.20.40.80
Noun	Bearing
Keyword String	Pillow Block
Manufacturer URL	<a href="http://www.rexnord.com">http://www.rexnord.com</a>
Manufacturer Item Number	MPS9400YF
Manufacturer Internal Number	6871274
Weight / LBS	118
D	5.406 Inch   137.312 Millimeter
Bolt Spacing Minimum	0 Inch   0Millimeter
Actual Bolt Center to Center	14.8 Inch   375Millimeter
Nominal Bolt Center to Center	14.8 Inch   375 Millimeter
d	4 Inch   101.6 Millimeter
B	5.75 Inch   146.05 Millimeter
Bolt Spacing Maximum	0 Inch   0Millimeter