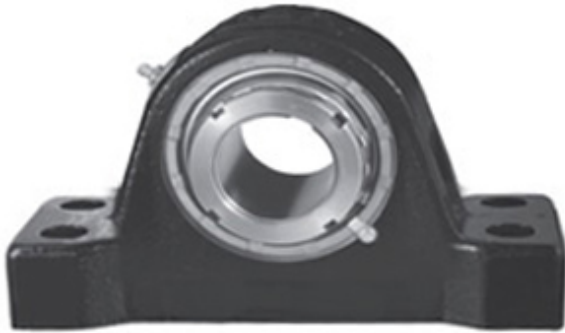




# BEARING CORP.OF AMERICA

2.938 Inch | 74.625 Millimeter x 4.25 Inch |  
 107.95 Millimeter x 4 Inch | 101.6 Millimeter  
 REXNORD ZPS9215F Pillow Block Bearings



Bearing No. ZPS9215F

ZPS9215F Bearing 2D drawings and 3D CAD models

Category	Pillow Block Bearings
Inventory	0.0
Manufacturer Name	REXNORD
Minimum Buy Quantity	N/A
Weight	24.97
EAN	0698210171001
Product Group	M06288
Number of Mounting Holes	4
Mounting Method	Tapered Adapter Sleeve
Housing Style	4 Bolt Pillow Block
Rolling Element	Spherical Roller Bearing
Housing Material	Cast Iron
Expansion / Non-expansion	Expansion
Mounting Bolts	3/4 Inch
Relubricatable	Yes
Insert Part Number	9215U
Seals	Clearance Seal
Housing Configuration	1 Piece Solid
Inch - Metric	Inch
Other Features	Double Row   Extra Heavy Duty
Long Description	4 Bolt Pillow Block; 2-15/16" Bore; 4" Base to Center Height; Tapered Adapter Sleeve Mount; Spherical Roller Bearing;



## BEARING CORP.OF AMERICA

	Relubricatable; Cast Iron; Clearance Seal; Expansion
Category	Pillow Block
UNSPSC	31171511
Harmonized Tariff Code	8483.20.40.80
Noun	Bearing
Keyword String	Pillow Block
Manufacturer URL	<a href="http://www.rexnord.com">http://www.rexnord.com</a>
Manufacturer Item Number	ZPS9215F
Manufacturer Internal Number	6817100
Weight / LBS	55
B	4 Inch   101.6 Millimeter
D	4.25 Inch   107.95 Millimeter
Bolt Spacing Maximum	0 Inch   0Millimeter
d	2.938 Inch   74.625 Millimeter
Nominal Bolt Center to Center	11.5 Inch   292.1 Millimeter
Actual Bolt Center to Center	11.5 Inch   292.1Millimeter
Bolt Spacing Minimum	0 Inch   0Millimeter