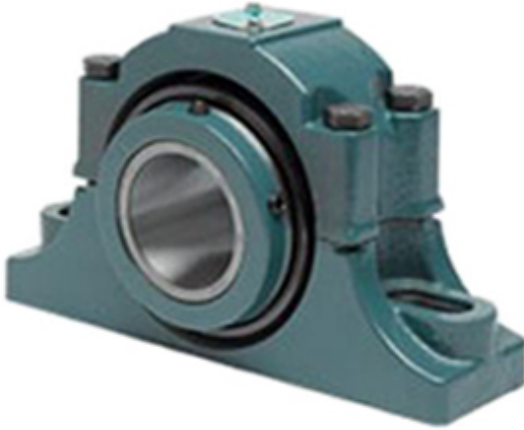




BEARING CORP.OF AMERICA



1.375 Inch | 34.925 Millimeter x 3 Inch | 76.2
Millimeter x 1.875 Inch | 47.63 Millimeter DODGE
P2B-EXL-106R Pillow Block Bearings

Bearing No. P2B-EXL-106R

P2B-EXL-106R Bearing 2D drawings and 3D CAD models

Category	Pillow Block Bearings
Inventory	0.0
Manufacturer Name	ABB MOTORS AND MECHANICAL INC
Minimum Buy Quantity	N/A
Weight	5.448
EAN	0782476587291
Product Group	M06288
Number of Mounting Holes	2
Mounting Method	Concentric Collar
Housing Style	2 Bolt Pillow Block
Rolling Element	Tapered Roller Bearing
Housing Material	Cast Iron
Expansion / Non-expansion	Non-expansion
Mounting Bolts	1/2 Inch
Relubricatable	Yes
Insert Part Number	S1U-EXL-106R
Seals	Triple Lip Contact
Housing Configuration	2 Piece Split
Inch - Metric	Inch
Other Features	Double Row Double Collar With Set Screw
Long Description	2 Bolt Pillow Block; 1-3/8" Bore; 1-7/8" Base to Center Height; Concentric Collar Mount; Tapered Roller



BEARING CORP.OF AMERICA

	Bearing; 5.31" Minimum Bolt Spacing; 5.94" Bolt Spacing Maximum; Relubricata
Category	Pillow Block
UNSPSC	31171511
Harmonized Tariff Code	8483.20.40.80
Noun	Bearing
Keyword String	Pillow Block
Manufacturer URL	http://www.dodge-pt.com
Manufacturer Item Number	P2B-EXL-106R
Manufacturer Internal Number	077223
Weight / LBS	12
D	3 Inch 76.2 Millimeter
Actual Bolt Center to Center	0 Inch 0 Millimeter
d	1.375 Inch 34.925 Millimeter
Nominal Bolt Center to Center	5.6 Inch 142.5 Millimeter
Bolt Spacing Minimum	5.31 Inch 134.874 Millimeter
B	1.875 Inch 47.63 Millimeter
Bolt Spacing Maximum	5.94 Inch 150.876 Millimeter