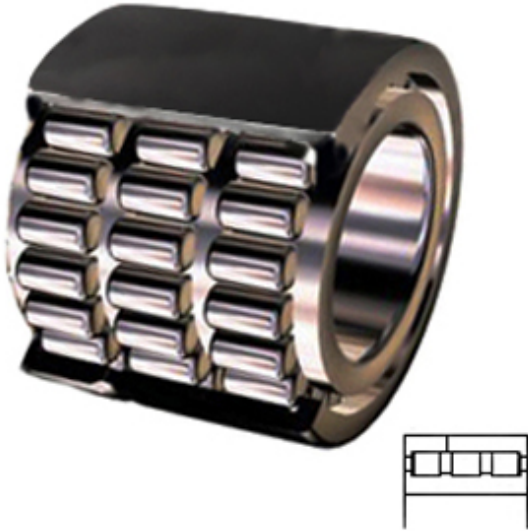




BEARING CORP.OF AMERICA



3.543 Inch | 90 Millimeter x 4.921 Inch | 125
Millimeter x 2.047 Inch | 52 Millimeter INA
SL11918 Cylindrical Roller Bearings

Bearing No. SL11918

Category	Cylindrical Roller Bearings
Inventory	0.0
Manufacturer Name	SCHAEFFLER GROUP
Minimum Buy Quantity	N/A
Weight	2.395
Product Group	B04144
Bore Profile	Straight
Cage Material	None
Precision Class	RBEC 1 ISO P0
Number of Rows of Rollers	Triple Row
Separable	No
Rolling Element	Cylindrical Roller Bearing
Profile	Complete with Outer and Inner Ring
Snap Ring	No
Internal Clearance	C0-Medium
Retainer	No
Relubricatable	Yes
Inch - Metric	Metric
Other Features	Full Complement 4 Rib Inner Ring 2 Rib Outer Ring Operating Temperature From -30 to 120 Deg
Long Description	90MM Bore; Straight Bore Profile; 125MM Outside Diameter; 52MM Width;

SL11918 Bearing 2D drawings and 3D CAD models



BEARING CORP.OF AMERICA

	RBEC 1 ISO P0; Triple Row; Not Separable; No Snap Ring; Relubricatable; C0-Medium Internal Clearance; No Retainer
Category	Cylindrical Roller Bearing
UNSPSC	31171547
Harmonized Tariff Code	8482.50.00.00
Noun	Bearing
Manufacturer URL	http://www.ina.com
Manufacturer Item Number	SL11918
Weight / LBS	5.28
d	3.543 Inch 90 Millimeter
D	4.921 Inch 125 Millimeter
B	2.047 Inch 52 Millimeter