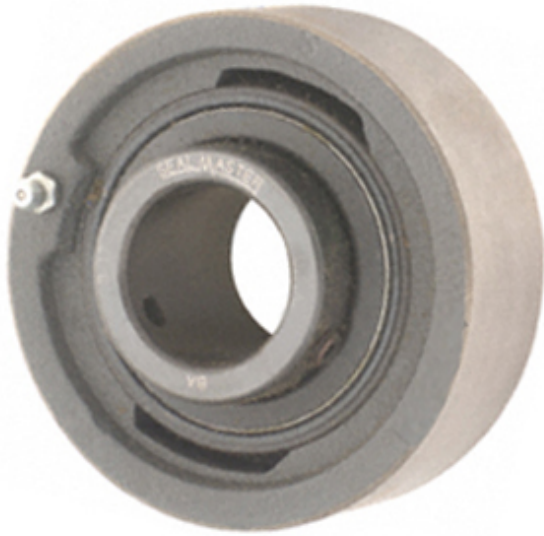




BEARING CORP.OF AMERICA



MSC-310 Bearing 2D drawings and 3D CAD models

SEALMASTER MSC-310 Cartridge Unit Bearings

Bearing No. MSC-310

Category	Cartridge Unit Bearings
Inventory	0.0
Manufacturer Name	REGAL BELOIT
Minimum Buy Quantity	N/A
Weight	2.724
EAN	0662461053553
Product Group	M06110
Mounting Method	Set Screw
Housing Style	Cartridge Unit
Housing Material	Cast Iron
Rolling Element	Ball Bearing
Expansion / Non-expansion	Non-expansion
Relubricatable	Yes
Insert Part Number	5310
Seals	Felt Labyrinth
Other Features	Single Row Medium Duty
Long Description	50MM Bore; 125.41MM Outside Diameter; 40.5MM Cartridge Housing Width; Set Screw; Cartridge Unit; Cast Iron; Ball Bearing; 55.6MM Length Thru Bore; Relubricatable; 5310 Insert; Felt Labyrinth; Non-expa
Inch - Metric	Metric
Category	Mounted Cartridge Units
UNSPSC	31171535
Harmonized Tariff Code	8483.20.40.40



BEARING CORP.OF AMERICA

Noun	Bearing
Keyword String	Cartridge
Manufacturer URL	http://www.emersonindustrial.com
Manufacturer Item Number	MSC-310
Manufacturer Internal Number	710164
Weight / LBS	6
d	1.969 Inch 50 Millimeter
D	2.189 Inch 55.6 Millimeter
Cartridge Housing Width	1.594 Inch 40.5 Millimeter
D	4.938 Inch 125.41 Millimeter