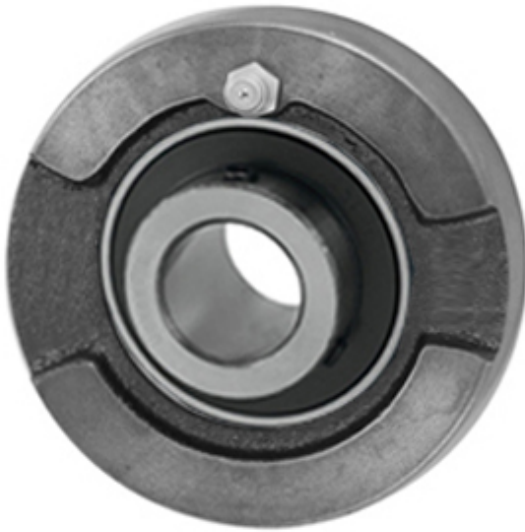




# BEARING CORP.OF AMERICA

## AMI UCLCX08-24 Cartridge Unit Bearings



Bearing No. UCLCX08-24

UCLCX08-24 Bearing 2D drawings and 3D CAD models

Category	Cartridge Unit Bearings
Inventory	0.0
Manufacturer Name	ASAHI BEARINGS
Minimum Buy Quantity	N/A
Weight	1.816
Product Group	M06110
Mounting Method	Set Screw
Housing Style	Cartridge Unit
Housing Material	Cast Iron
Rolling Element	Ball Bearing
Expansion / Non-expansion	Non-expansion
Relubricatable	Yes
Insert Part Number	UCX08-24
Seals	Single Lip Contact
Other Features	Single Row   Medium Duty   Wide Inner Race   Steel Insert   Has Slinger
Long Description	1-1/2" Bore; 4-3/8" Outside Diameter; 1-7/16" Cartridge Housing Width; Set Screw; Cartridge Unit Housing; Cast Iron; Ball Bearing; 1-15/16" Length Thru Bore; Relubricatable; UCX08-
Inch - Metric	Inch
Category	Mounted Cartridge Units
UNSPSC	31171535
Harmonized Tariff Code	8483.20.40.40
Noun	Bearing



## BEARING CORP.OF AMERICA

Keyword String	Cartridge
Manufacturer URL	<a href="http://www.amibearings.com">http://www.amibearings.com</a>
Manufacturer Item Number	UCLCX0824
Weight / LBS	4
D	1.937 Inch   49.2 Millimeter
Cartridge Housing Width	1.438 Inch   36.525 Millimeter
d	1.5 Inch   38.1 Millimeter
D	4.375 Inch   111.125 Millimeter